
APPENDIX N: INJURED PERSONS ACTION PLAN: STAGING SITE

This document covers the procedures to be followed in the event of a serious injury occurring at the staging site during as phase of the Desecheo rat eradication operation

Step 1 Assess Incident:

1. Assess situation, ensure it is safe before responding.
2. Notify the Incident Commander who will nominate a response coordinator.
3. Alert the First Aid Responder (FAR). Convey to FAR:
 - a. Number of patients
 - b. Location of incident
 - c. Additional resources required
4. Put on PPE.
5. Initiate life-saving measures to the injured person if required: Airway, Breathing, Circulation, and Disability (spinal injury).
6. Do not move injured person unless there is danger of further harm or exposure.
7. Report the patient's condition to the SO and ask them to call **9-1-1**.

Step 2 Stabilize patient and initiate evacuation by 9-1-1:

1. Use a cell phone or satellite telephone as needed to call **9-1-1**.
2. The **9-1-1** network will help you to stabilize the patient while an ambulance arrives.
3. Tell them you are in an emergency situation.
4. Provide them with the cell phone number, or the satellite phone number and the satellite network phone number **1-480-768-2500** in case the call is disconnected (**see note at end).
 - a. Provide them with the following information
 - i. Emergency location:
 - Airport Rafael Hernández (BQN), Aguadilla, Puerto Rico (Lat 18° 29' 8.93"N, Long 67° 8' 42.65" W)
 - Domes PREPA Power Plant, Rincón, Puerto Rico (Lat 18° 21' 54" N, Long 67° 16' 07" W)
 - FURA facilities (Maritime Unit-Police Department), Añasco, Puerto Rico (Lat 18° 17' 32.35" N, Long 67° 11' 53.86" W)
 - ii. What the emergency is & how it happened.
 - iii. Provide any further details given by the first responder relevant to the patient's condition.
5. Follow the 9-1-1 operator's directions to stabilize the patient.
6. Once the patient has been stabilized and the evacuation has been initiated, proceed to Step 3.

Step 3: Patient assessment:

1. While waiting for the ambulance:
 - a. Complete a head to toe exam.
 - b. Take vital signs.
 - c. Take a SAMPLE history.
 - d. Complete a SOAP note (see below) and be prepared to relay this information to emergency medical responders.
7. Monitor patient, protect from exposure

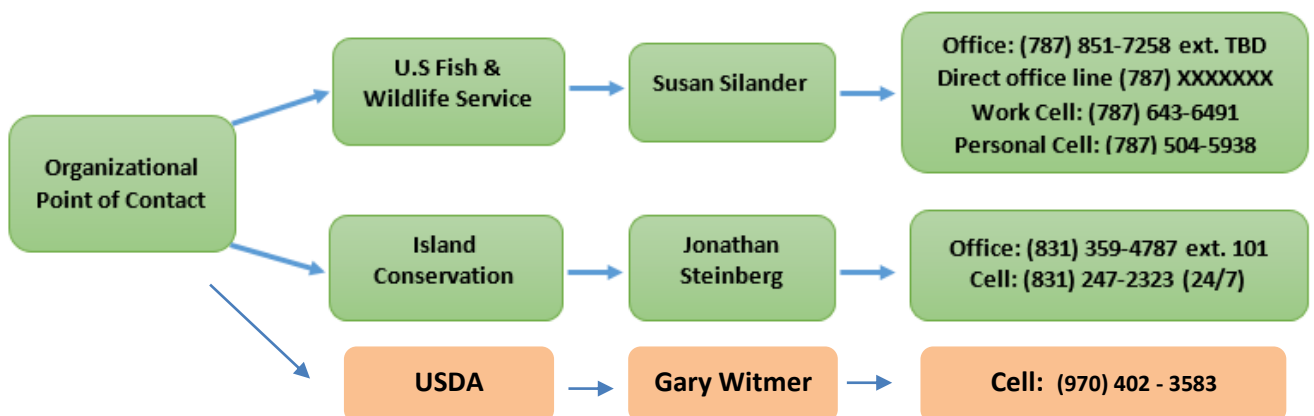
8. Periodically reassess scene safety.
9. Turn scene management over to rescue team upon arrival.
10. Identify which hospital the patient will be admitted to.
11. If patient is an Island Conservation employee or contractor/volunteer, proceed to Step 4. If patient is not an Island Conservation employee or contractor/volunteer (i.e. USFWS, DNRA), proceed to Step 5.

Step 4 Notify MedEx

1. Use the satellite phone to call MedEx: **+ 1 (410) 453-6330 Member ID: 374596**
12. Provide them with the cell phone number or satellite phone number **8816-326-33588** and the satellite network phone number **1-480-768-2500** in case the call is disconnected (**see note at end).
13. Tell them:
 1. What the emergency is & how it happened.
 2. That 9-1-1 was called and the emergency services have taken the patient to hospital named by the emergency responders.
 3. Any other relevant information which MedEx might request.
4. Once MedEx has been notified, proceed to Step 5.

Step 5 Notify Organizational Point of Contact

1. Use chart below to identify organizational point of contact.
2. Describe the type of emergency, patient's name, current status and describe how the person was injured.
3. Inform them what measures have been taken to assure patient's well-being (contact with 9-1-1/MedEx/AeroMed, etc) and what the next steps are.
4. Once the patient has been taken to the hospital, call the contact person of the injured person.



NOTETo connect to a satellite phone:**

Using a cell phone to call the 12-digit number directly is often not possible (the cell phone provider won't allow it). Instead you can provide the emergency services with the **satellite network number** which can be called from a cell phone.

Dial the satellite network at 1-480-768-2500. A recording will answer "Welcome to the Iridium Satellite Global Network". **Enter the Iridium 12 digit satellite phone number 8816-326-33588.** If the Iridium Phone is not switched on, it will connect to voicemail. The originator will pay a long distance charge to Arizona and the Iridium Phone will be billed at \$1.99 per minute regardless of rate plan.

Wilderness First Responder SOAP Note

Name _____ Date _____

Location _____

Subjective/Summary/Story (age, sex, chief complaint, OPQRST, MOI/HPI)._____
_____**Objective/Observations/Findings** (Describe position found. Describe injuries)._____
_____**Patient Exam** __________
_____**Vital Signs**

Time _____

LOR _____

HR _____

RR _____

SCTM _____

BP _____

Pupils _____

Temp _____

History

Symptoms _____

Allergies _____

Medications _____

Pertinent Medical History _____

Last Intake/Output _____

Events recent _____

Assessment (List Problems) __________
_____**Plan** (Plan for each problem) __________
_____**Anticipated problems** __________
